



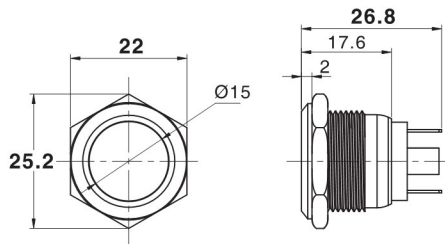
东莞市朗纶电子制品有限公司
Dongguan langlun electronic products Co., Ltd

Ø19经济型金属按钮 Metal Waterproof Push Button Switch

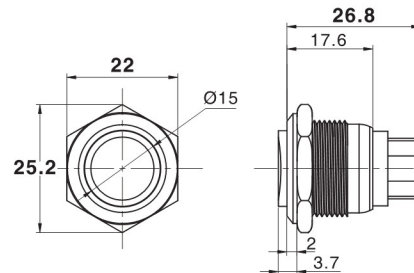
名称/外观 Product appearance	带灯形式 Illuminated type	操作类别 Operation	触点 Contact	产品型号 Model	外壳材料 Crust Material
实面圆形 / Flat round 	不带灯 Without LED	自复 Momentary	1NO	EJ19-211P	Nil:不锈钢 T:铜镀镍 A:铝 G:铜镀铬 B:铜镀黑色 Nil:Stainless steel T: Copper Plated Ni A: Aluminium G: Copper plated Cr B: Copper plated with black
高面圆形 / High round 	不带灯 Without LED	自复 Momentary	1NO	EJ19-221P	
弧面圆形 / Domed round 	不带灯 Without LED	自复 Momentary	1NO	EJ19-231P	
实面圆形 / Flat round 	不带灯 Without LED	自复 Momentary	1NO	EJ19-211A	
高面圆形 / High round 	不带灯 Without LED	自复 Momentary	1NO	EJ19-221A	
弧面圆形 / Domed round 	不带灯 Without LED	自复 Momentary	1NO	EJ19-231A	



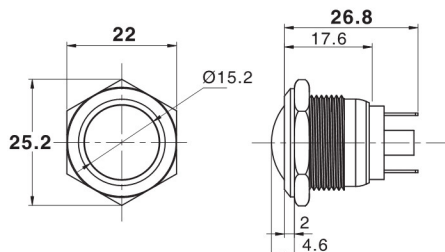
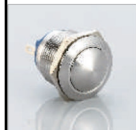
平钮焊线型



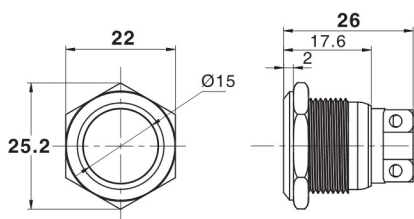
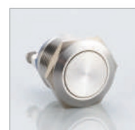
高位钮焊线型



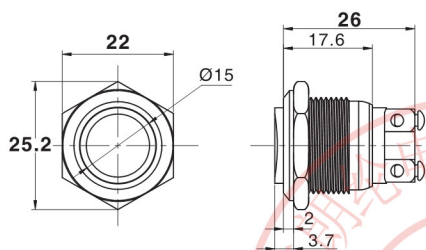
弧钮焊线型



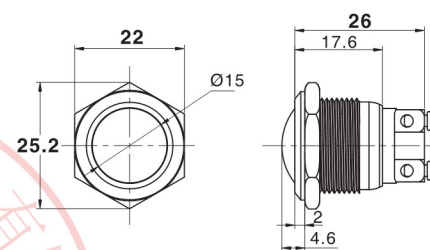
平钮螺丝型



高位钮螺丝型



弧钮螺丝型



Ø19经济型带灯金属按钮 Metal Waterproof Push Button Switch with LED

名称/外观 Product appearance	带灯形式 Illuminated type	操作类别 Operation	触点 Contact	产品型号 Model	外壳材料 Crust Material	带灯颜色 Color	额定电压 Rated Voltage
环面圆形 / Ring round 	带灯 With LED	自复 Momentary	1NO	EJ19-2A1A□●	NiI: 不锈钢 T: 铜镀镍 A: 铝 G: 铜镀铬 B: 铜镀黑色 NiI: Stainless steel T: Copper Plated Ni A: Aluminium G: Copper plated Cr B: Copper plated with black	请用下列颜色编码 替换型号中的"□" R 红色/Red G 绿色/Green Y 黄色/Yellow W 白色/White B 蓝色/Blue	请用下列颜色编码 替换型号中的"●" D: 24VDC E: 12VDC F: 6.3VDC A1: 110VAC A2: 220VAC

弧钮带灯

